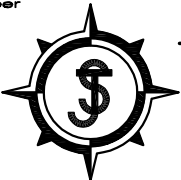
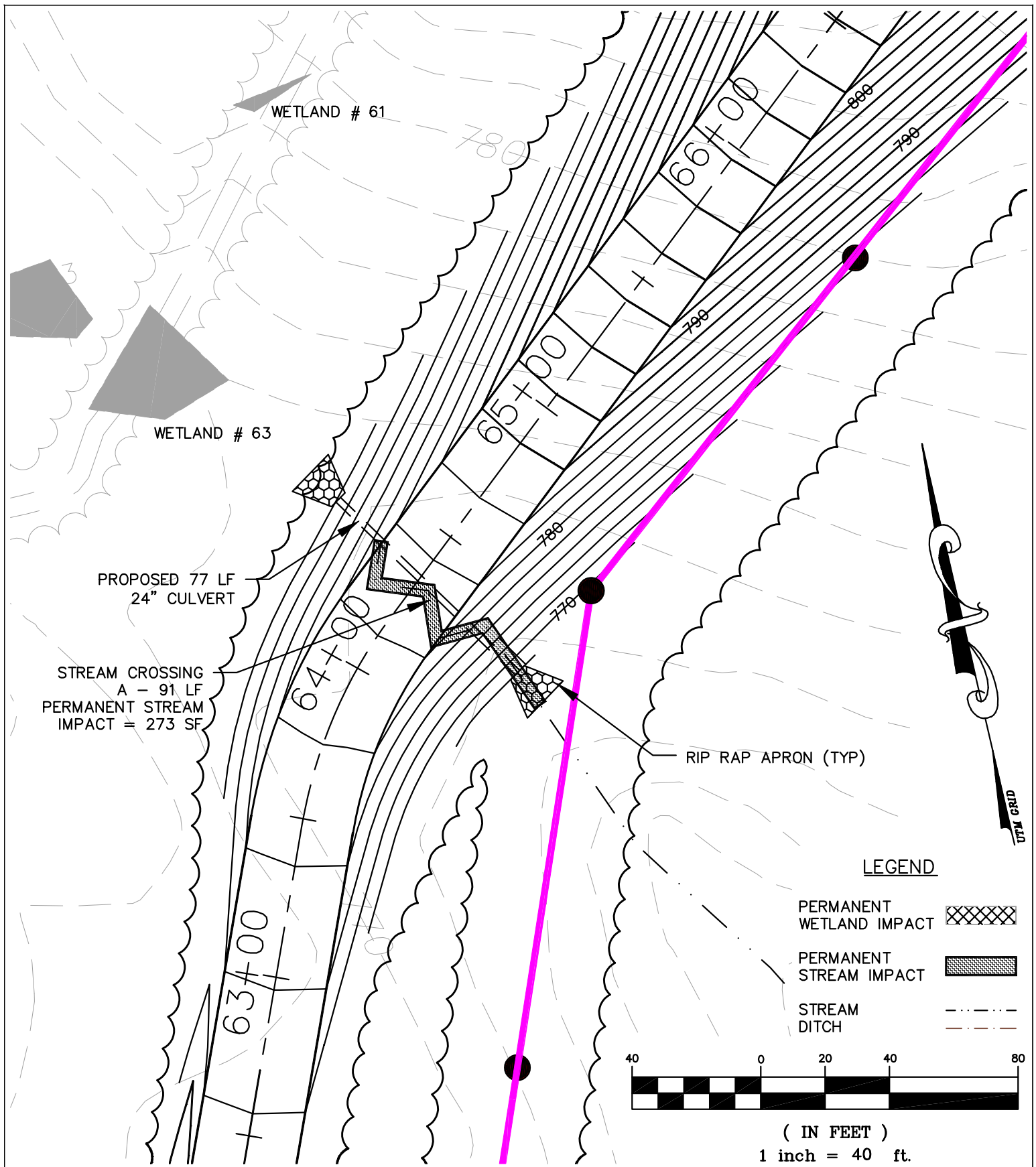


(IN FEET)
1 inch = 5000ft.

Project No. 60390E	STETSON WIND PROJECT		
Engineer JAMES W. SEWALL COMPANY	-	-	-
 ENGINEERS, SURVEYORS RESOURCE CONSULTANTS 136 CENTER STREET OLD TOWN, MAINE 04468 (207) 827-4456	Project Location STETSON MOUNTAIN	Date 10/31/2007	Drawn by JH Checked by PG
	Drawing Description EXHIBIT 10.1- OVERVIEW OF WETLAND IMPACTS AND STREAM CROSSINGS		Scale: 1" = 5000' <small>2007-09-10 wetland and stream impact.dwg</small>



LEGEND

- PERMANENT WETLAND IMPACT
- PERMANENT STREAM IMPACT
- STREAM DITCH



(IN FEET)
1 inch = 40 ft.

Project No. **60390E**

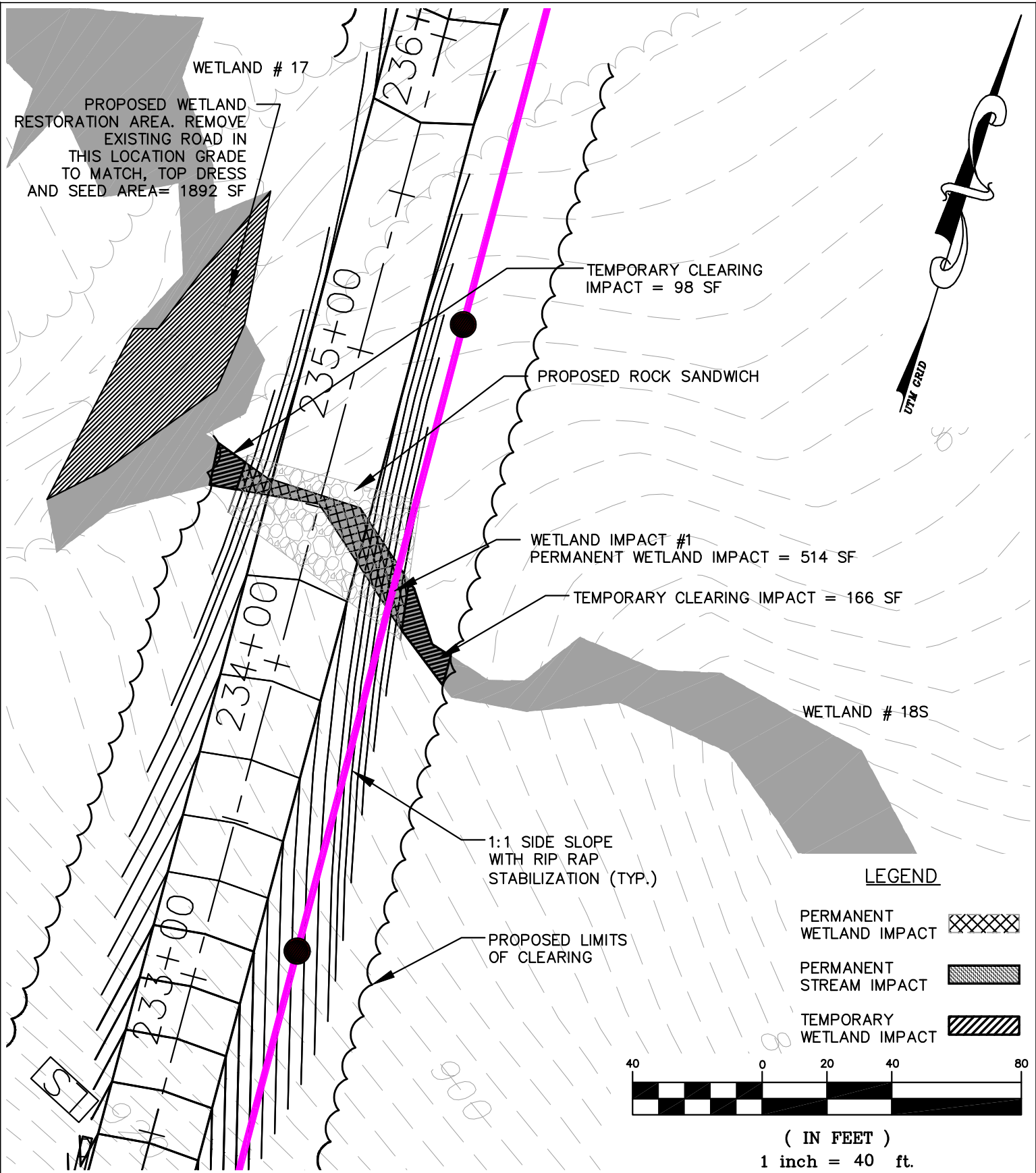
Engineer **JAMES W. SEWALL COMPANY**

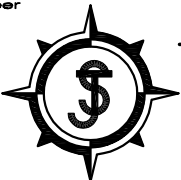
ENGINEERS, SURVEYORS
RESOURCE CONSULTANTS
136 CENTER STREET
OLD TOWN, MAINE 04468
(207) 827-4456

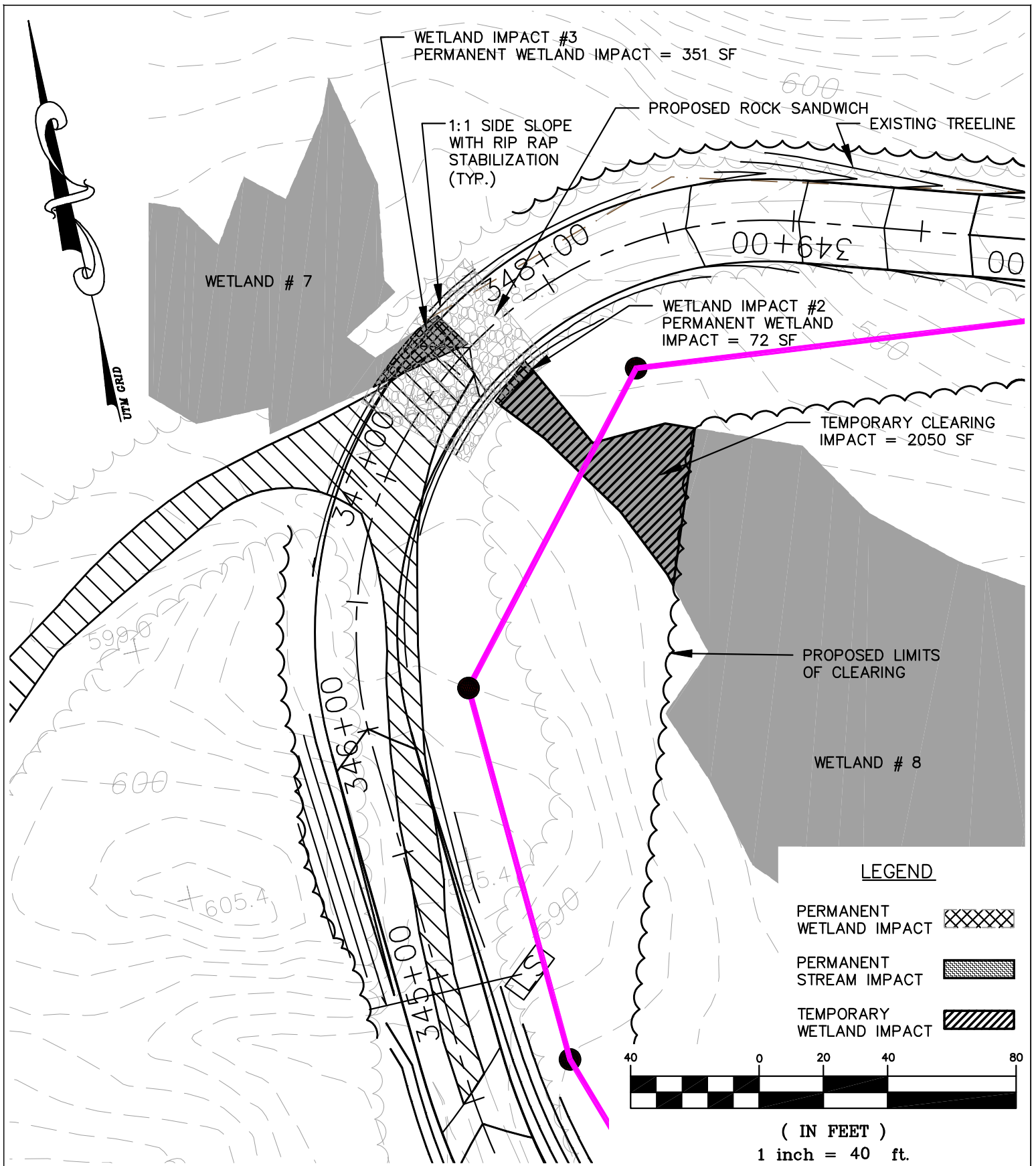
**STETSON WIND PROJECT
EVERGREEN V, LLC**

Project Location	Date	Drawn by	Checked by
STETSON MOUNTAIN	10/31/2007	JH	PG
Drawing Description	Scale: 1" = 40'		
EXHIBIT 10.2 STREAM CROSSING A			

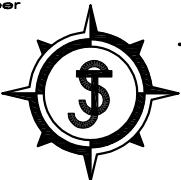
2007-09-10 wetland and stream impact.dwg



Project No. 60390E		STETSON WIND PROJECT EVERGREEN V, LLC	
Engineer JAMES W. SEWALL COMPANY			
ENGINEERS, SURVEYORS RESOURCE CONSULTANTS 136 CENTER STREET OLD TOWN, MAINE 04468 (207) 827-4456		Project Location STETSON MOUNTAIN	Date 10/31/2007
		Drawn by JH	Checked by PG
		Drawing Description EXHIBIT 10.3 WETLAND IMPACT #1	
		Scale:	1" = 40'



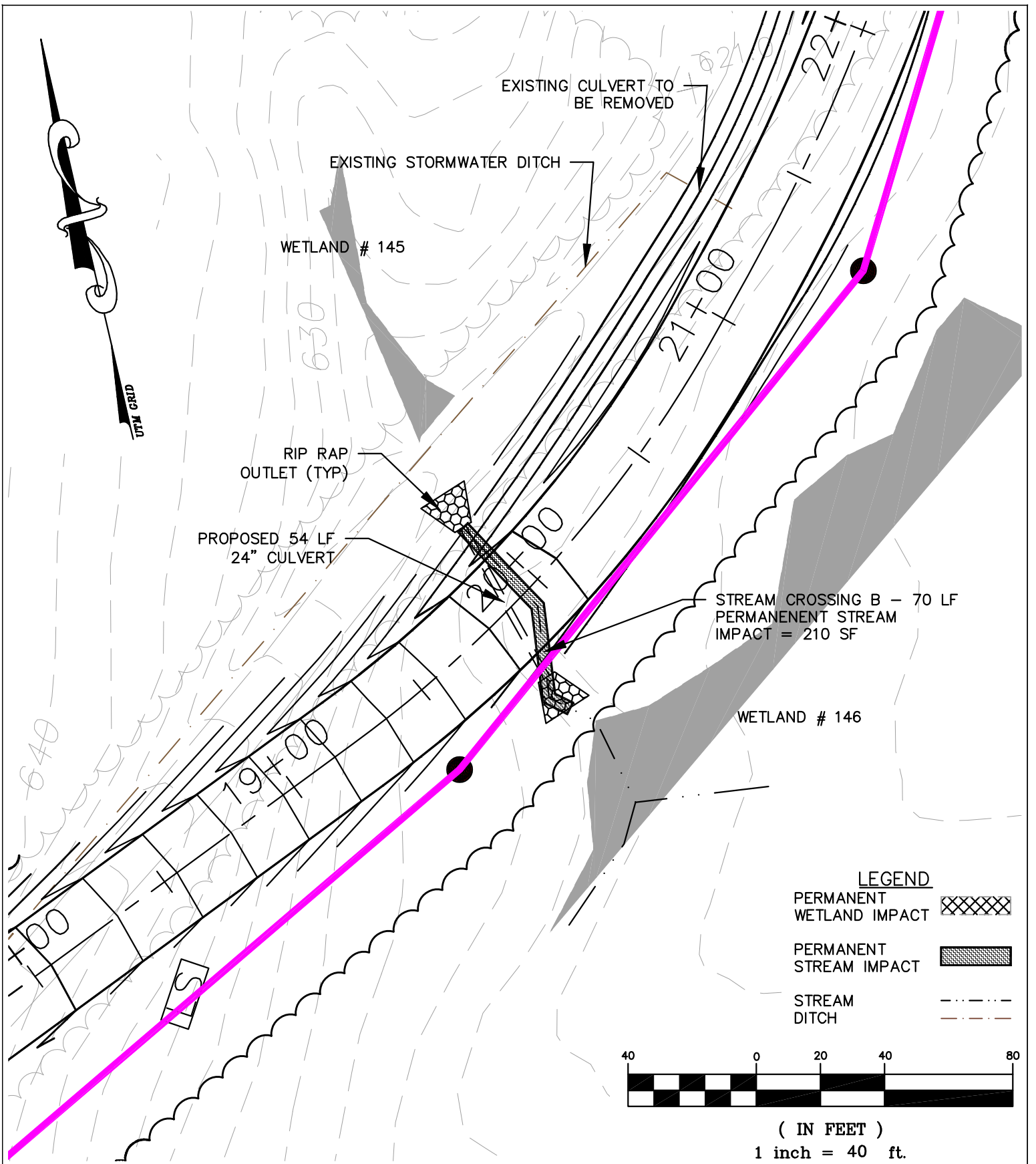
Project No. **60390E**

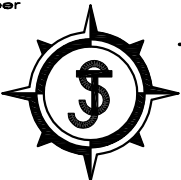
Engineer

JAMES W. SEWALL COMPANY
 ENGINEERS, SURVEYORS
 RESOURCE CONSULTANTS
 136 CENTER STREET
 OLD TOWN, MAINE 04468
 (207) 827-4456

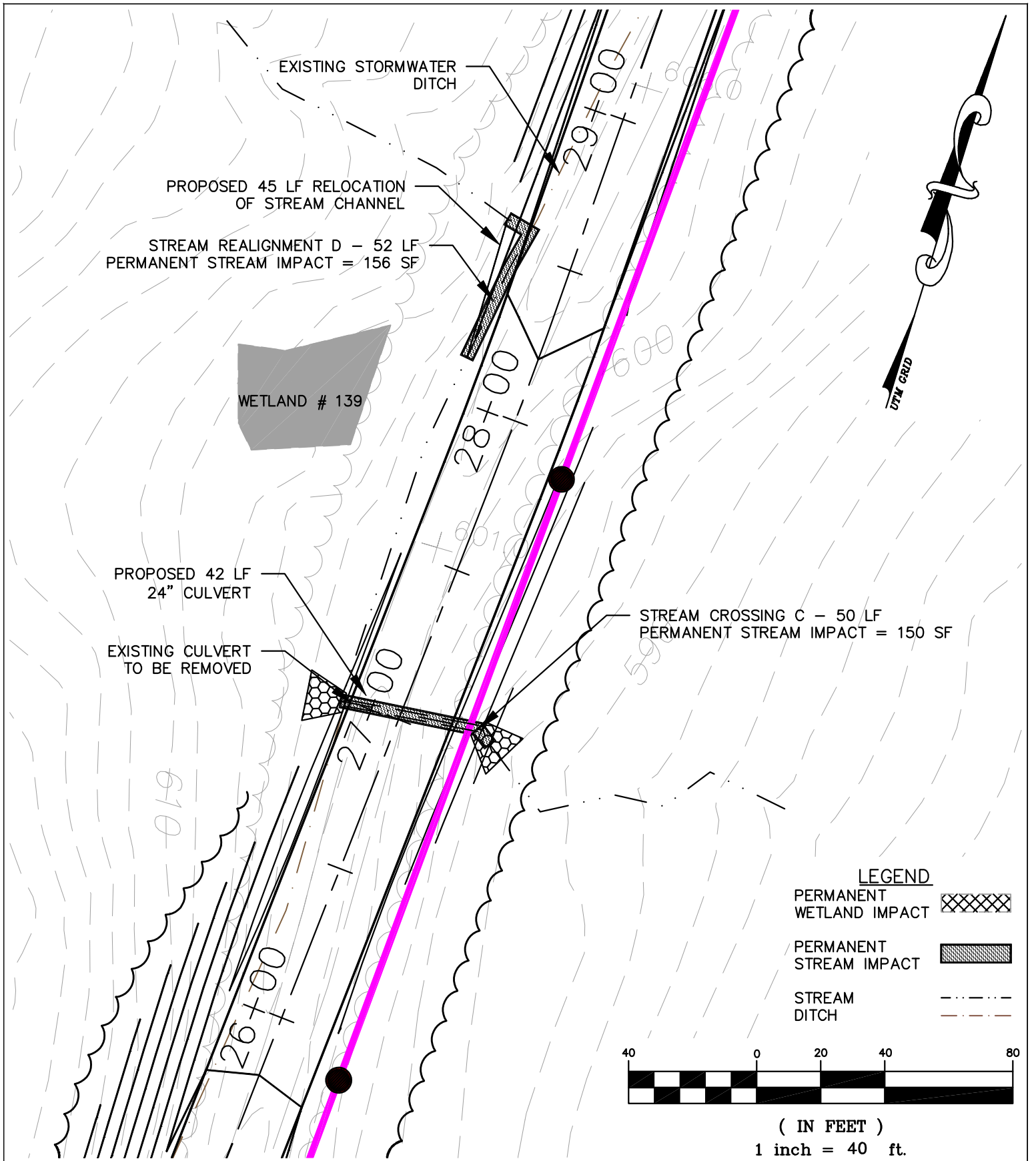
**STETSON WIND PROJECT
 EVERGREEN V, LLC**

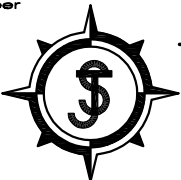
Project Location	Date	Drawn by	Checked by
STETSON MOUNTAIN	10/31/2007	JH	PG
Drawing Description	Scale: 1" = 50'		
EXHIBIT 10.4 WETLAND IMPACT #2 & #3			

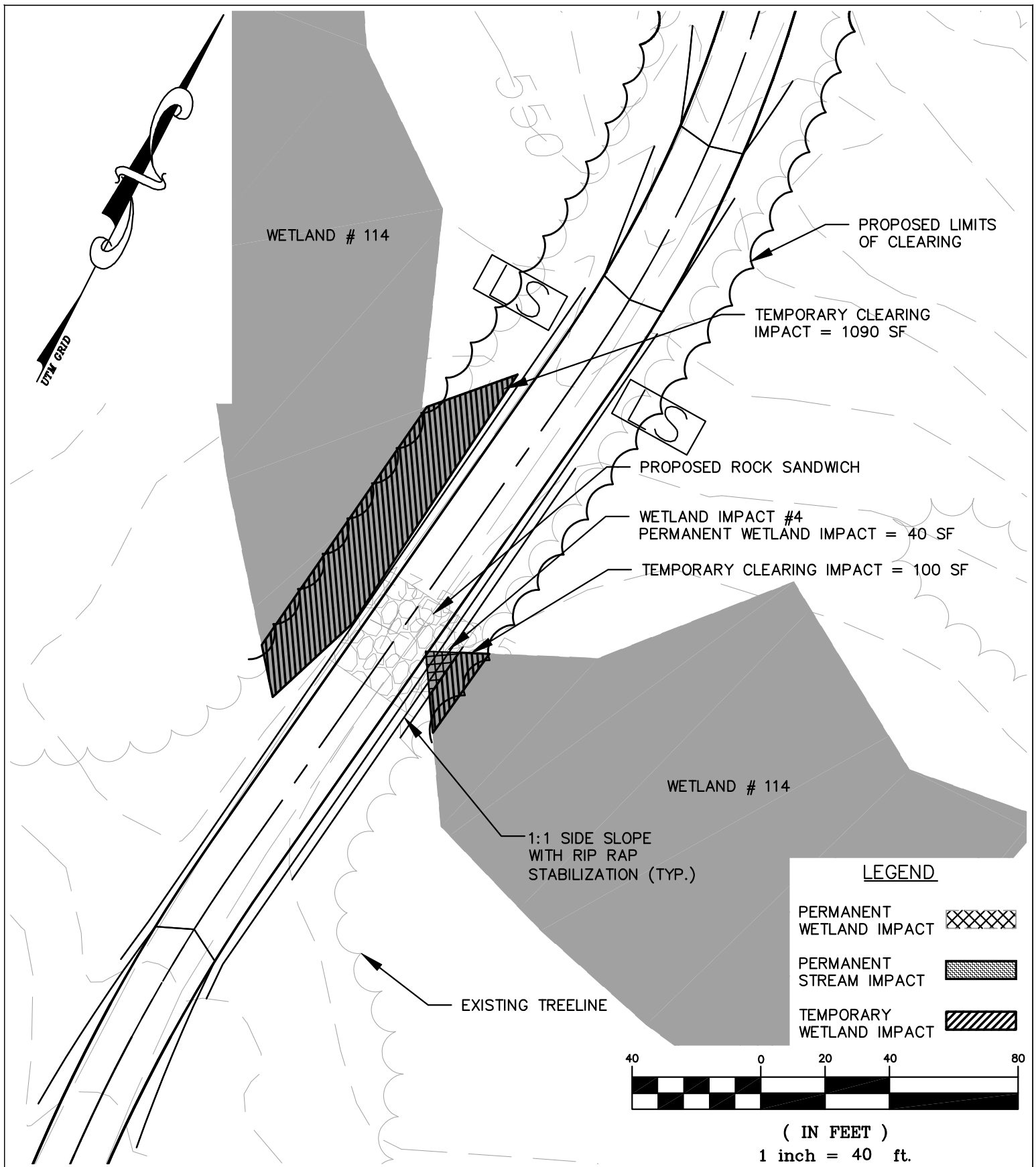
2007-09-10 wetland and stream impact.dwg



Project No. 60390E		STETSON WIND PROJECT EVERGREEN V, LLC			
Engineer JAMES W. SEWALL COMPANY					
 ENGINEERS, SURVEYORS RESOURCE CONSULTANTS 136 CENTER STREET OLD TOWN, MAINE 04468 (207) 827-4456		Project Location	Date	Drawn by	Checked by
		STETSON MOUNTAIN	10/31/2007	JH	PG
		Drawing Description	Scale: 1" = 40'		
		EXHIBIT 10.5 STREAM CROSSING B			

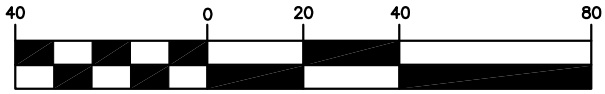


Project No. 60390E		STETSON WIND PROJECT	
Engineer JAMES W. SEWALL COMPANY		EVERGREEN V, LLC	
 <p>ENGINEERS, SURVEYORS RESOURCE CONSULTANTS 136 CENTER STREET OLD TOWN, MAINE 04468 (207) 827-4456</p>		Project Location	Date
		STETSON MOUNTAIN	10/31/2007
<p>Drawing Description</p> <p>EXHIBIT 10.6 STREAM CROSSING C & D</p>		Drawn by	Checked by
		JH	PG
		Scale:	1" = 40'



LEGEND

PERMANENT WETLAND IMPACT	
PERMANENT STREAM IMPACT	
TEMPORARY WETLAND IMPACT	



(IN FEET)
1 inch = 40 ft.

Project No. **60390E**

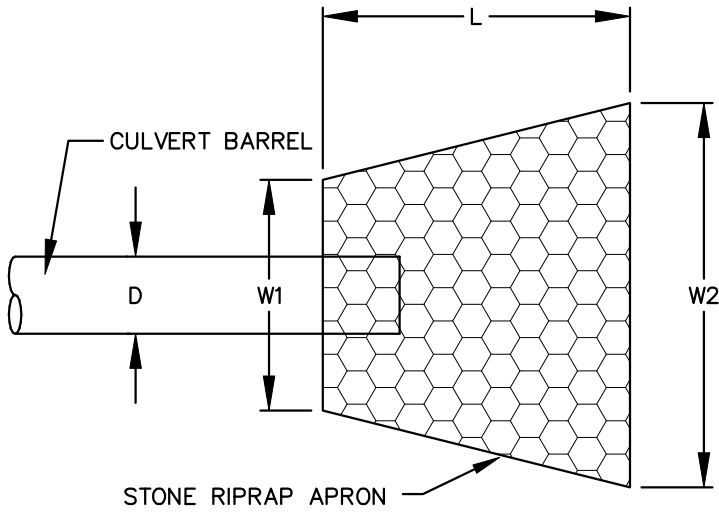
Engineer
JAMES W. SEWALL COMPANY

ENGINEERS, SURVEYORS
RESOURCE CONSULTANTS
136 CENTER STREET
OLD TOWN, MAINE 04468
(207) 827-4456

**STETSON WIND PROJECT
EVERGREEN V, LLC**

Project Location	Date	Drawn by	Checked by
STETSON MOUNTAIN	10/31/2007	JH	PG
Drawing Description		Scale: 1" = 40'	
EXHIBIT 10.7 WETLAND IMPACT #4 & #5			

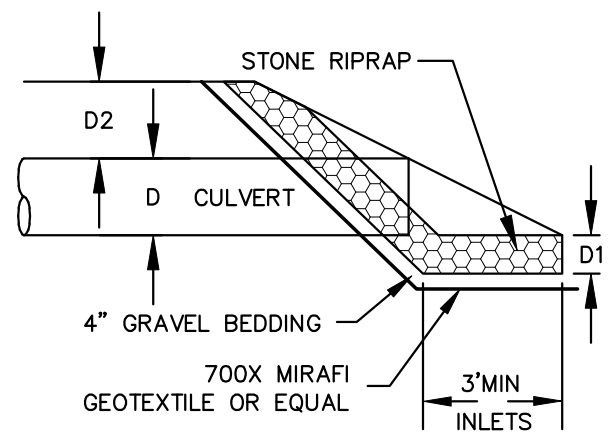
2007-09-10 wetland and stream impact.dwg



D	W1	W2	L	d50
15"	4'	14'	10'	4"
18"	5'	15'	10'	6"
24"	6'	16'	12'	6"

NOTES
 1. THE RIPRAP APRON SHALL BE CONSTRUCTED WITH NO SLOPE ALONG ITS LENGTH.

CULVERT OUTLET DETAIL
PLAN VIEW
 NOT TO SCALE

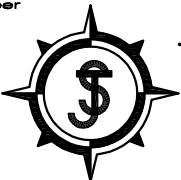


D	D1	D2 INLET	D2 OUTLET
15"	9"	24"	12"
18"	13.5"	24"	12"
24"	13.5"	36"	12"

CULVERT INLET/OUTLET DETAIL
PLAN VIEW
 NOT TO SCALE

Project No. **60390E**

Engineer **JAMES W. SEWALL COMPANY**

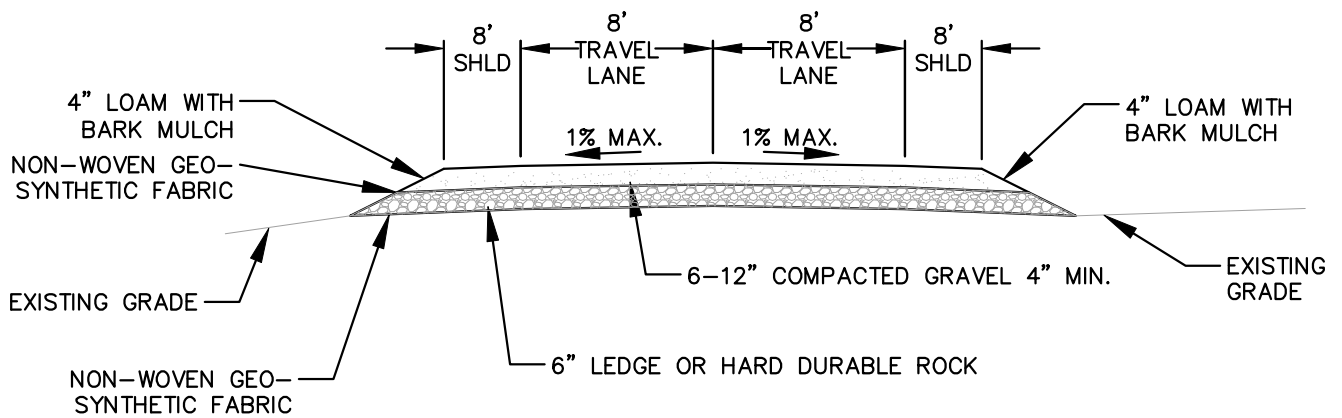


ENGINEERS, SURVEYORS
 RESOURCE CONSULTANTS
 136 CENTER STREET
 OLD TOWN, MAINE 04468
 (207) 827-4456

STETSON WIND PROJECT
EVERGREEN V, LLC

Project Location	Date	Drawn by	Checked by
STETSON MOUNTAIN	09/13/2007	JH	PG
Drawing Description	Scale: NTS		
EXHIBIT 10.8 RIP RAP APRON DETAIL			

2007-09-10 wetland and stream impact.dwg



TYPICAL ROAD CROSS-SECTION WITH ROCK SANDWICH MATERIAL

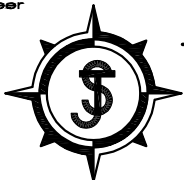
NOT TO SCALE

Project No.

60390E

Engineer

JAMES W. SEWALL COMPANY



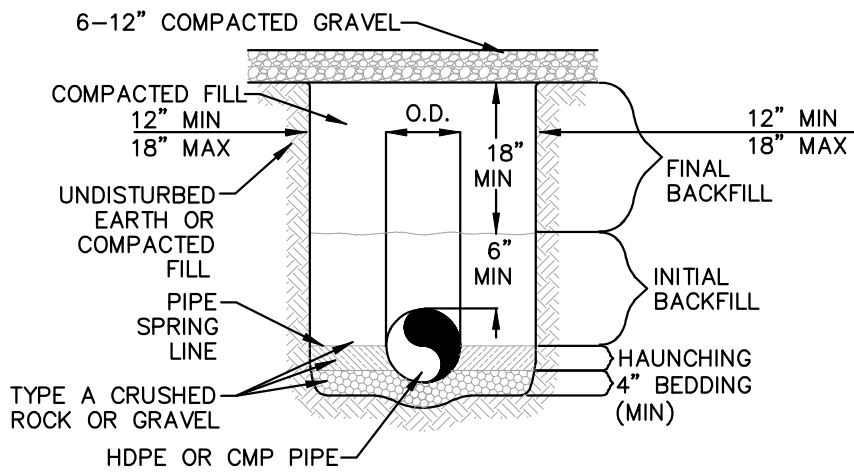
ENGINEERS, SURVEYORS
RESOURCE CONSULTANTS
136 CENTER STREET
OLD TOWN, MAINE 04468
(207) 827-4456

**STETSON WIND PROJECT
EVERGREEN V, LLC**

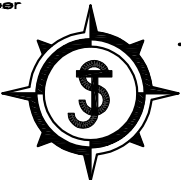
Project Location	Date	Drawn by	Checked by
STETSON MOUNTAIN	09/13/2007	JH	PG

Drawing Description Scale: NTS

**EXHIBIT 10.9
ROCK SANDWICH DETAIL**



STORM DRAIN TRENCH AND BEDDING
NOT TO SCALE

Project No. 60390E		STETSON WIND PROJECT EVERGREEN V, LLC		
Engineer	<i>JAMES W. SEWALL COMPANY</i>	-	-	
 <p align="center">ENGINEERS, SURVEYORS RESOURCE CONSULTANTS 136 CENTER STREET OLD TOWN, MAINE 04468 (207) 827-4456</p>	Project Location	Date	Drawn by	Checked by
	STETSON MOUNTAIN	09/13/2007	JH	PG
Drawing Description	Scale:		NTS	
EXHIBIT 10.10 CULVERT CROSS SECTION		2007-09-10 wetland and stream impact.dwg		